



Clerkenwell Design Week 2017

Highlights



Contents



Trend spot	3
BuzziSpace	6
Brunner	7
Steelcase	8
Spacestor	9
Orangebox	10
Frovi	11
Muuto	12

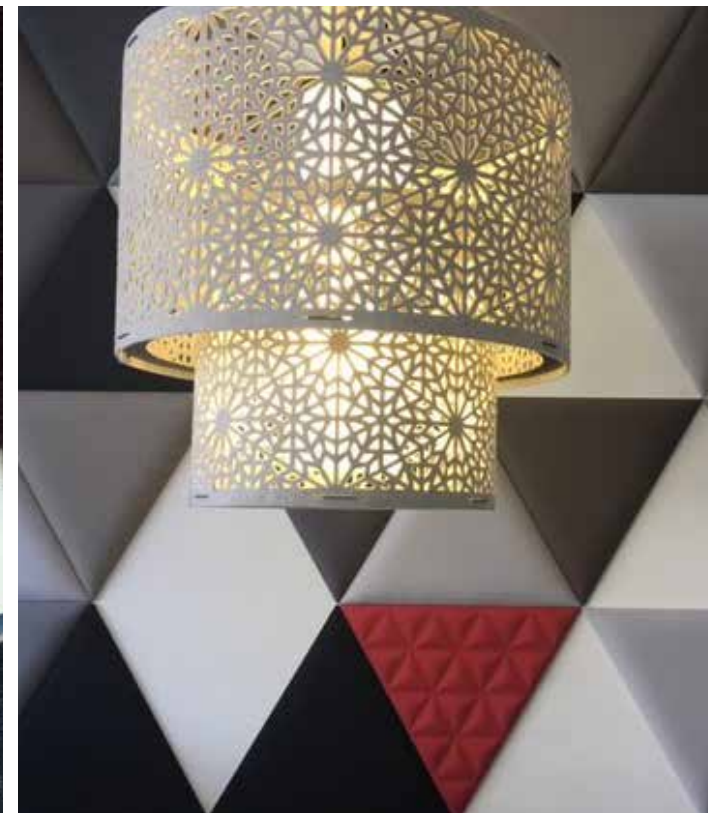
Celebrating its 9th year in May the award-winning CDW has firmly established itself as the UK's leading independent design festival and annually attracts the international design community to this small area of London for three days of exciting events.

Clerkenwell is home to more creative businesses and architects per square mile than anywhere else on the planet, making it truly one of the most important design hubs in the world.

CDW showcased a wealth of creative talent and inspirational ideas to catch your eye, here's some of the highlights.

+ Trend spot

"Home from home"



A strong presence from the domestic designer/ makers throughout the festival defined the growing trend of blending home with the workplace. In particular the "Hygge" style evoking a Skandi relaxed comfort with pure forms, textured fabrics and light timbers were on show across all CDW.

+ Trend spot

"Pastel hues"



Pastels are emerging as a strong colour direction in the workplace. Their muted hues are enhanced by natural timbers or contrasting metals (copper & matt black frequently used).

Grounded by a generous use of neutrals including wood, a widely featured material which adds additional warm & comfort to office products. Look great in a palette group across lounge, café seating and accessories.

+ Trend spot

"Playful landscape"



Creating a bespoke interiors with a family of products which can be interchanged, offering a variety of workplace landscapes.

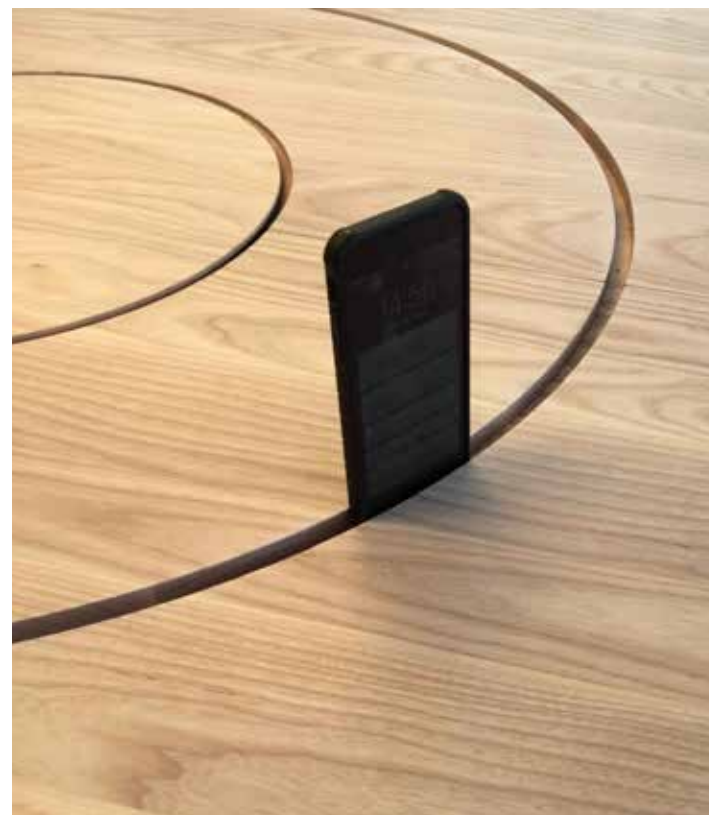
Particular ranges which caught our eye were Atom from Boss and Bivi from Steelcase. Atom's range of soft organic forms creates a broad array of habitats from collaborative space for us to interact and exchange ideas, to more focused spaces.

While Bivi's form derived from entrepreneurial startup culture, the playful configurations mean you can achieve a lot from one family. You can even park your bike or skateboard!

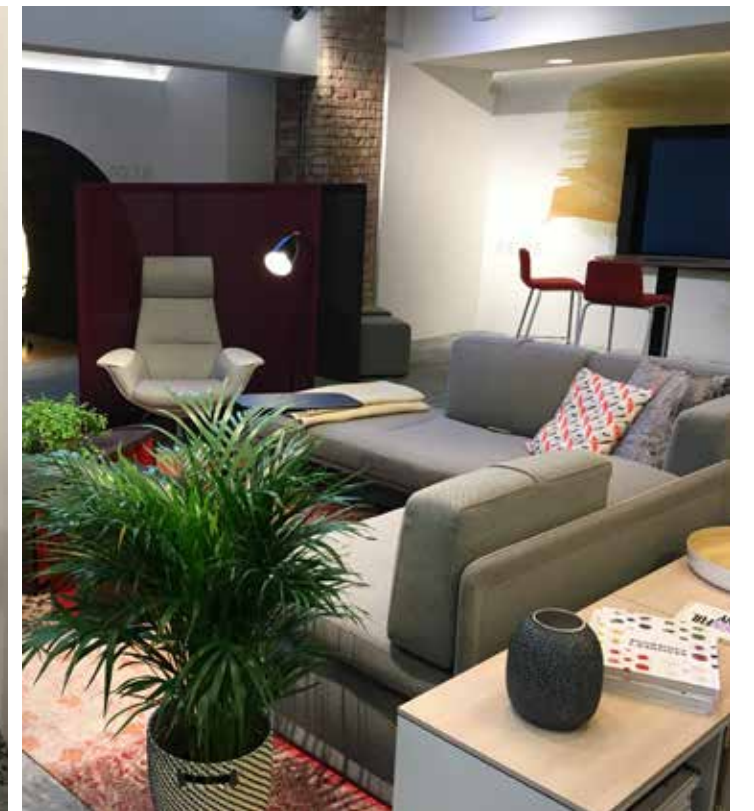
Bivi UK & Atom's full range will be launched later this year.

A - Atom from Boss

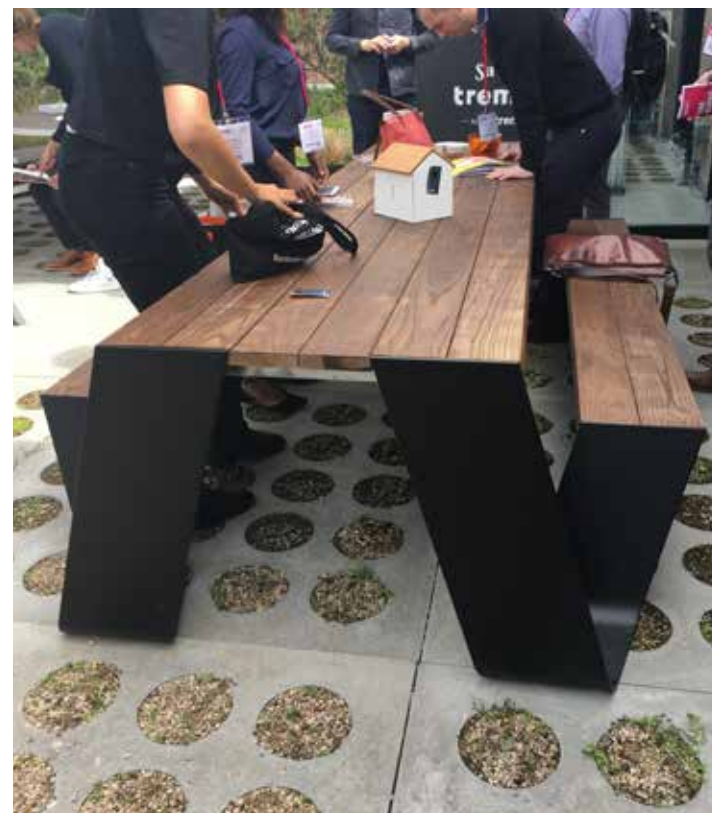
B - Bivi from Steelcase

















IE Studio
 29 Cloth Fair
 London
 EC1A 7JQ
t: 0203 761 0400
e: info@ie-uk.com
w: ie-uk.com

National Client Centre
 14 King Street
 Leeds
 LS1 2HL
t: 0113 887 7587
e: leeds@ie-uk.com
w: ie-uk.com

Customer Experience Centre
 22 Easter Park
 Ferry Lane South, Rainham
 RM13 9BP
t: 0203 761 0400
e: rainham@ie-uk.com
w: ie-uk.com

ie
 insightful environments